

# CEMENT INDUSTRY

>> One Single Partner for all Your Needs <<



VERTICAL MILL



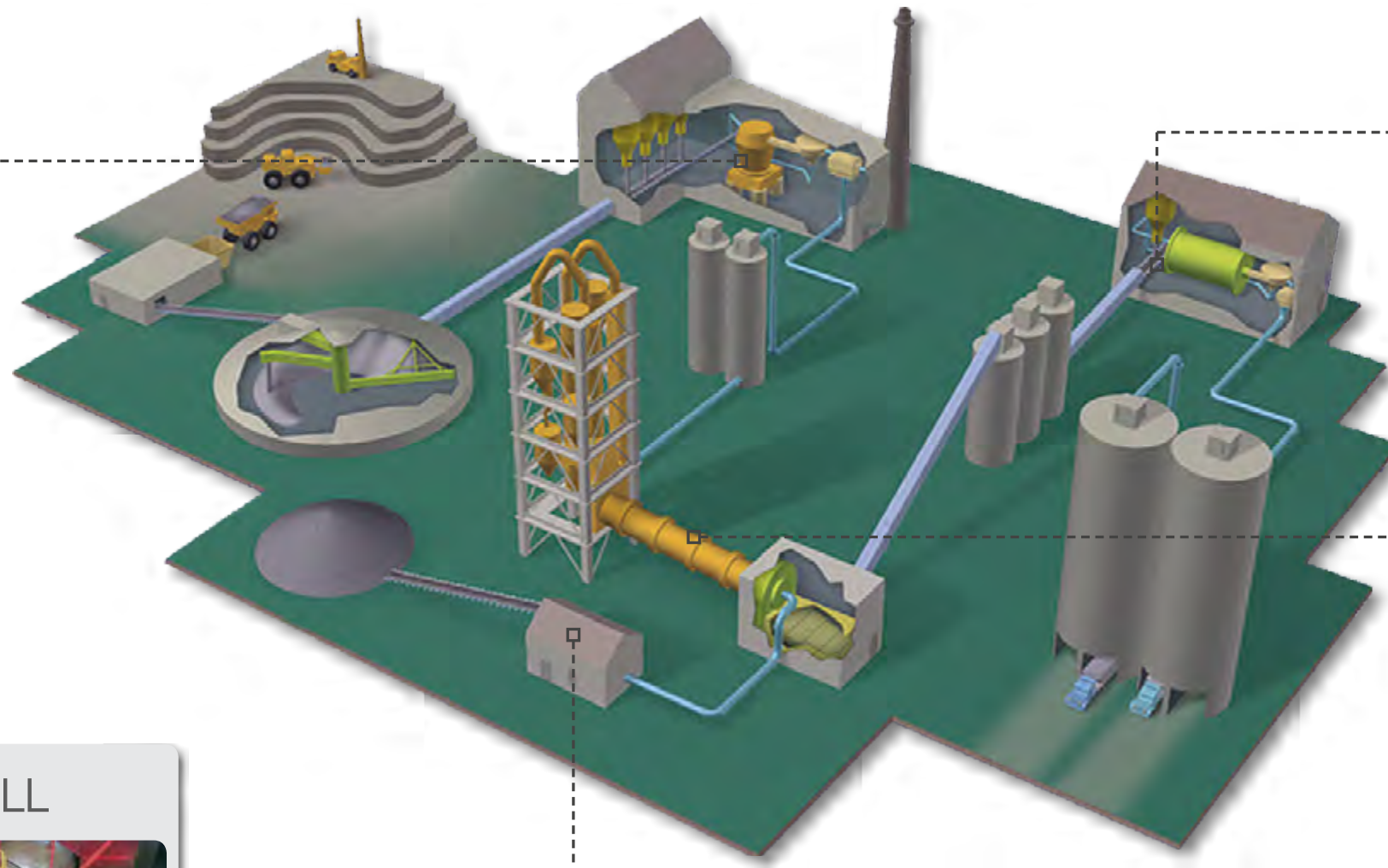
HORIZONTAL MILL



COAL MILL



ROTARY KILN





# ROTARY KILN

Riding ring fitted on kiln shell



Shafted support rollers



Bogiflex KGD self-aligning kiln gear drive



Lime kiln



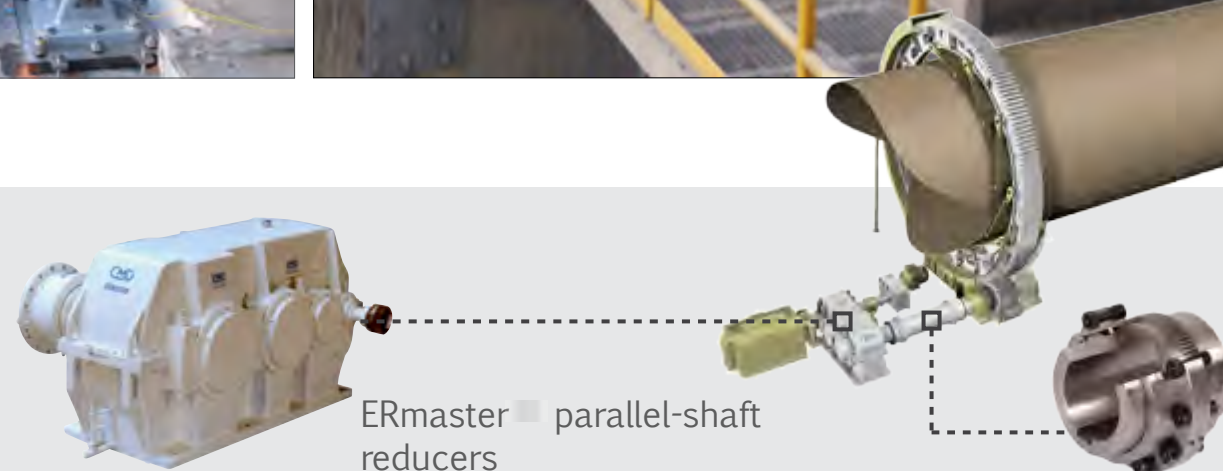
Support rings (cast steel or ductile iron)



Gear



3D measuring machine for large-size XXL workpieces



ERmaster parallel-shaft reducers



ERsun Planetary gearbox



Worm gearbox Inching drive brake system





HORIZONTAL MILL



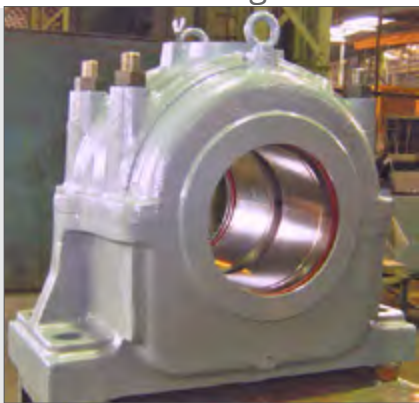
Mill Heads



Pinions



Bearings



Girth gears



Scan this QR Code  
to watch the video  
of VBCM16:



■ Couplings



Teeth Coupling



Spring Coupling

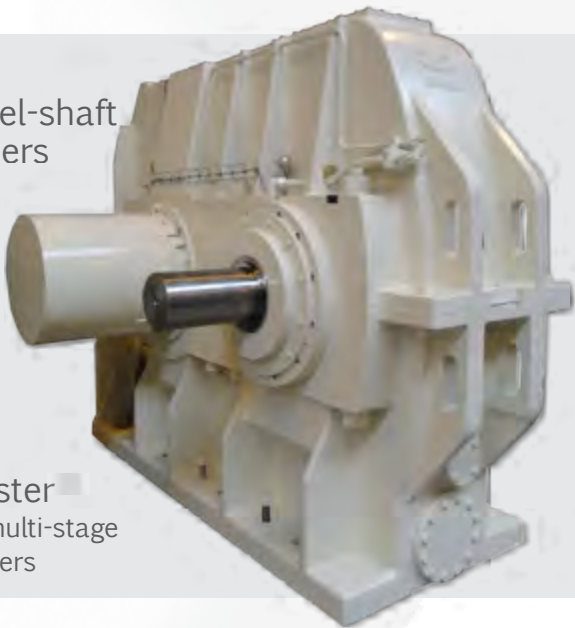
■ Compact lateral drives

Millrex  
Dual-pinion self-aligning drive



ERmill  
Single-pinion self-aligning drive

■ Parallel-shaft reducers

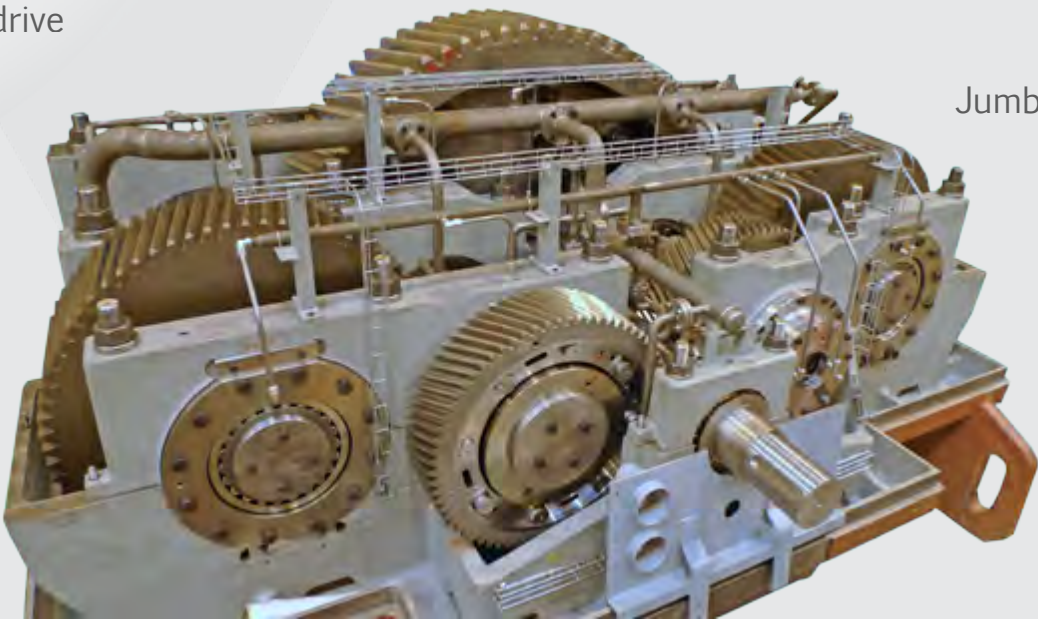


ERmaster  
Single and multi-stage reducers

ERmaster  
Inching drive brake system



■ Central drive



Jumborex



## VERTICAL MILL

### ■ RAW MILL

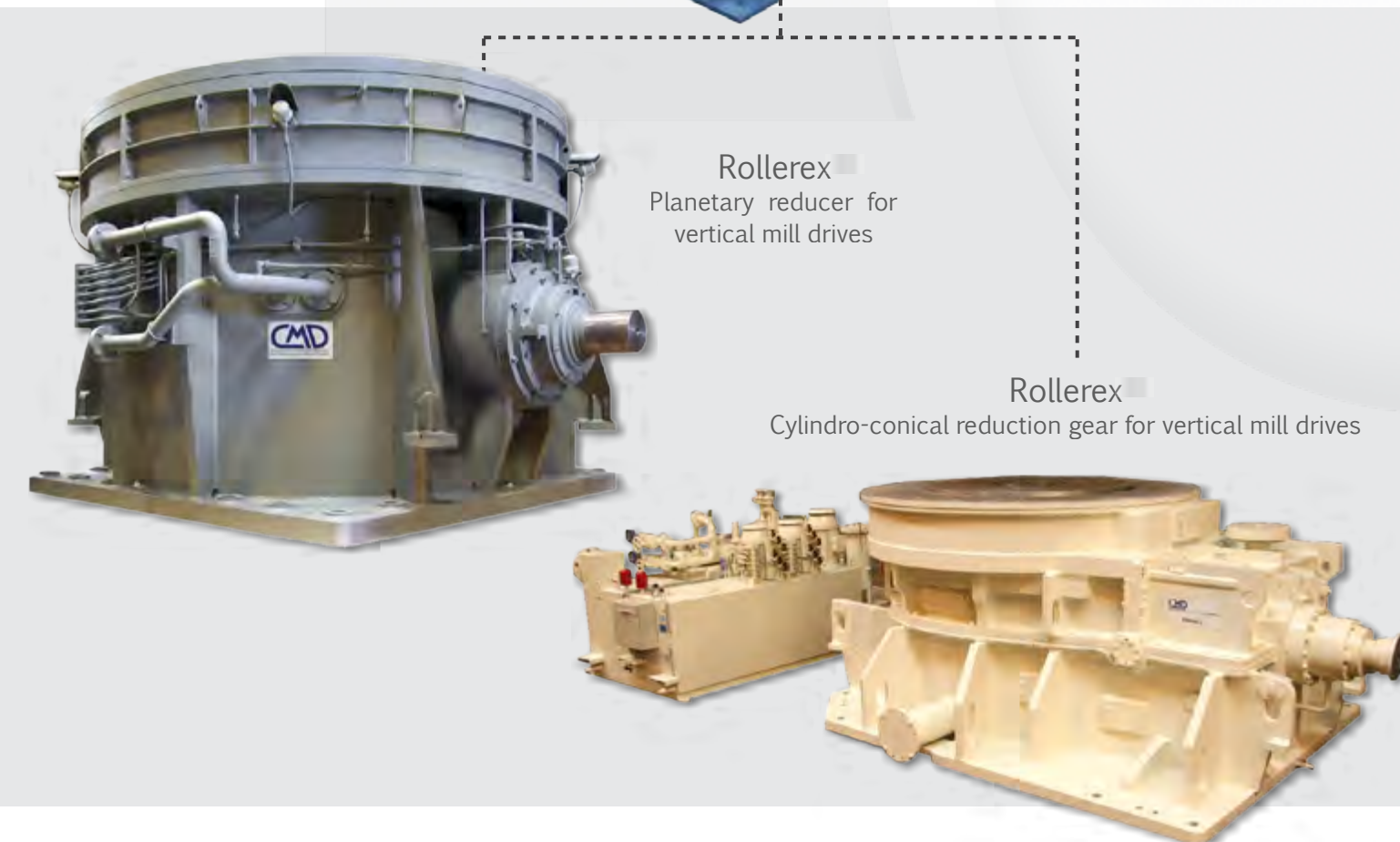


## # SERVICE



Many qualified engineers and technicians within Groupe CIF are capable of travelling the world over for operations ranging from installation and commissioning of supplied products, to preventive maintenance and technical assessments.

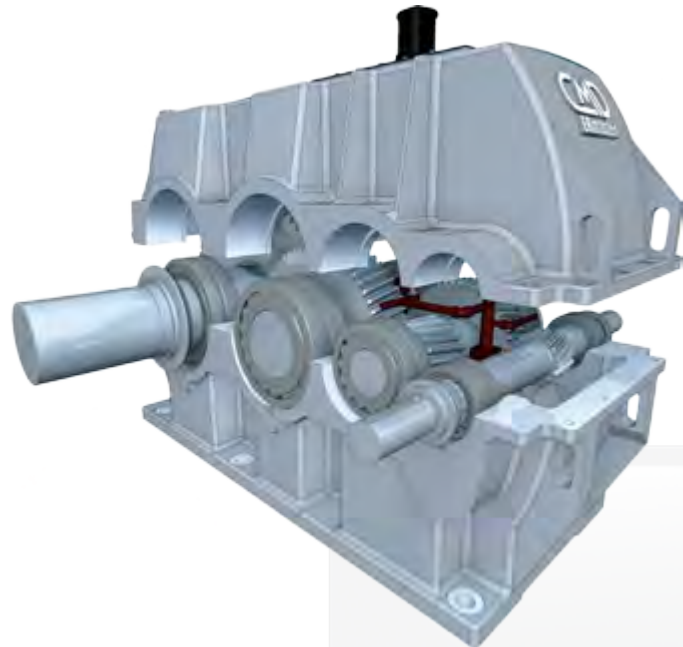
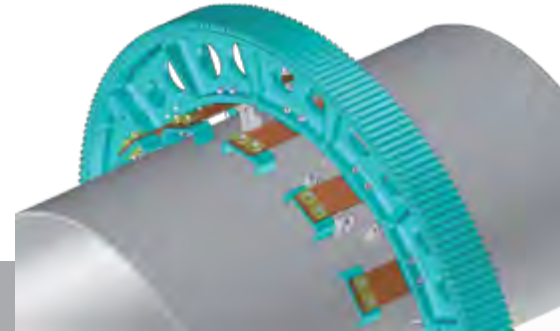
- Reverse Engineering
- Supervision - Commissioning
- Monitoring
- Assessments/Recommendations
- Refurbishment of all types/brands of gearboxes



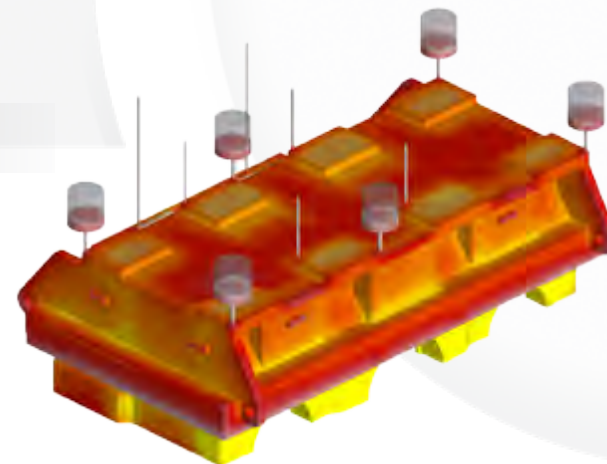


# # OUR ADDED VALUE

## # R&D - ENGINEERING

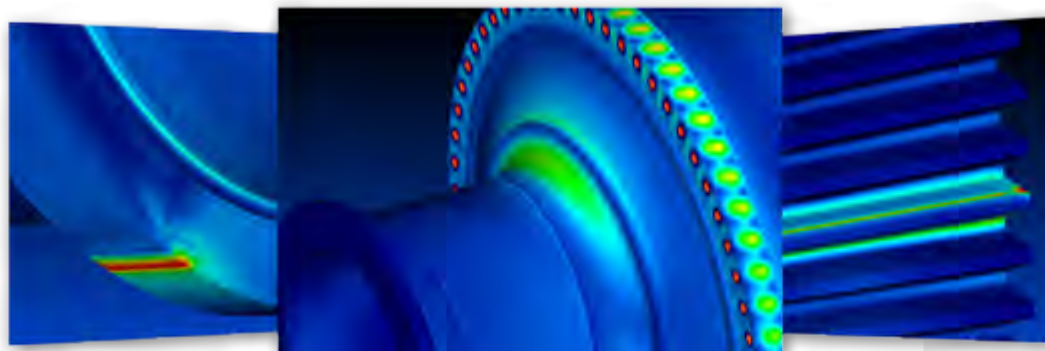


- Finite Element Analysis (FEA)
- Solidification and Flow Simulation Modeling
- Mechanical drive train design (open and enclosed gearing)
- Development of custom mechanical couplings
- Conversion of fabrications to castings (iron or steel)
- Technical staff of approx. 100 engineers/technicians
- Multiple patents each year



## # MATERIAL DEVELOPMENT

- Proprietary metal casting grades (FerryNod®, Ferrynox)
- Full metallurgical test lab



## # Test bench

- Multiple in-house test benches for product development and run-testing of custom gearboxes



- Gear drive training center





Compagnie Industrielle et Financière de Bussy

Vecqueville - BP 33  
F-52301 JOINVILLE CEDEX  
Tél. : +33 (0)3 25 94 04 24  
[www.legroupecif.com](http://www.legroupecif.com)



June 2017



**FERRY CAPITAINE**  
Usines de Bussy  
Vecqueville - BP 33  
F-52301 JOINVILLE  
CEDEX  
Tél. : +33 (0)3 25 94 04 24  
[www.ferrycapitain.fr](http://www.ferrycapitain.fr)



**CMD**  
36, Avenue de l'Europe  
Immeuble Étendard BP43  
F-78142 VELIZY-VILLACOUBLAY  
Tél. : +33 (0)1 34 63 12 24  
[www.cmdgears.com](http://www.cmdgears.com)



**FCMD**  
Schmiedestrasse 5  
D - 45527 HATTINGEN  
Tel. : +49 (0) 2324 686 520  
[www.fcmd-gmbh.de](http://www.fcmd-gmbh.de)



**FAD**  
17, Rue Pierre Bériot  
BP 329  
F-59723 DENAIN CEDEX  
Tél. : +33 (0)3 27 21 44 00  
[www.fad-denain.com](http://www.fad-denain.com)



**ATELIERS ROCHE**  
15, Boulevard Marcelin  
Berthelot - BP50  
F-51052 REIMS CEDEX  
Tél. : +33 (0)3 26 07 17 65  
[www.ateliersroche.fr](http://www.ateliersroche.fr)  
[www.roche-meshmaker.com](http://www.roche-meshmaker.com)



**AHD**  
11, Avenue du Général  
Sarail  
F-52100 SAINT DIZIER  
Tel. : +33 (0)3 25 56 75 00  
[www.ahd.fr](http://www.ahd.fr)